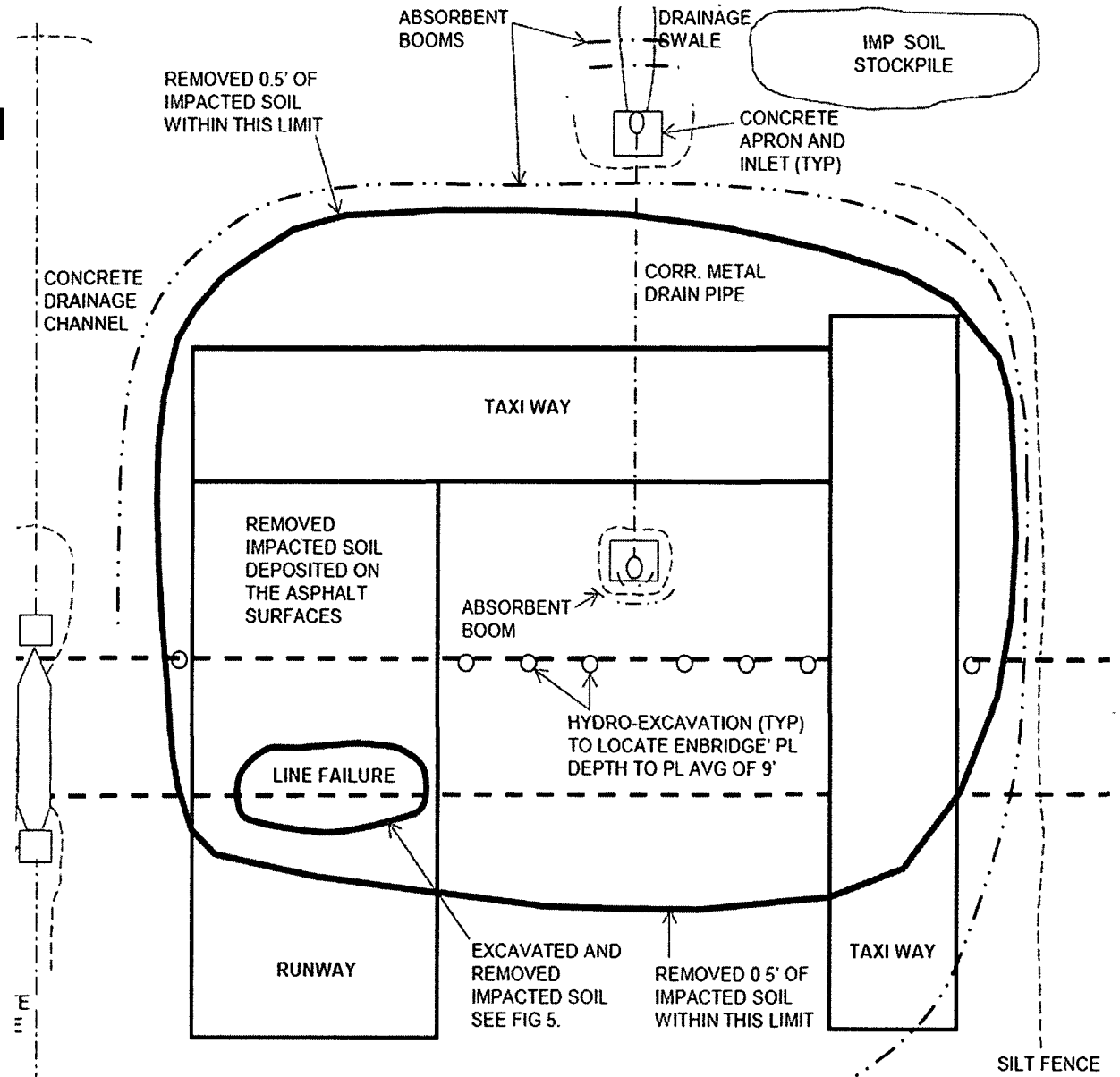


DCP Presentation to the Panola County  
Commissioners: March 27<sup>th</sup>, 2017

**DCP CAG-10 Gathering Pipeline : Panola County  
Airport**

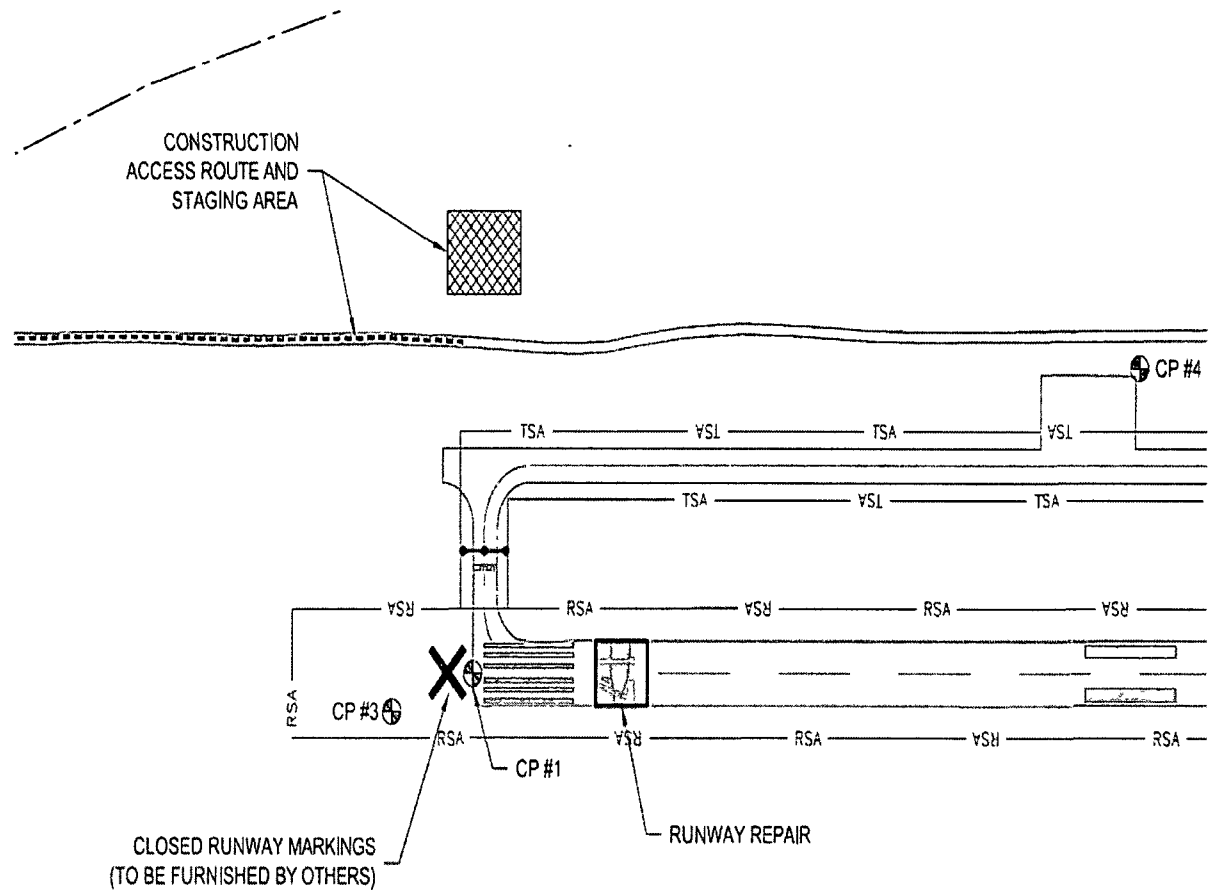
# CAG-10 Gathering Pipeline: Environmental Remediation

1. SET Environmental is currently finalizing the site closure report and will issue to the Texas Railroad Commission soon.



## CAG-10 Gathering Pipeline: Runway Repair

1. Panola County has been requested to provide a review of the technical design for runway repairs and an approval of the construction contractors to be included in the runway repair.
2. DCP's General Contractor is reviewing the technical design package and will subcontract the runway repair work.
3. Panola County, DCP, KSA and the General Contractor will participate in the bid evaluation process
4. DCP has offered financial support (up to \$20,000) to Panola County to provide independent inspection and technical review of the repair plans for the airport runway.



## CAG-10 Repair Site Protocol

03/13/2017; Rev D

### CAG-10 Gathering Pipeline: Safety Plan

1. DCP proposes to add the Repair Site Protocol plan, developed in the beginning with the assistance of the Airport Manager, to the technical design proposal bid package.
2. The proposal bid package specifies that the runway repair contractor submit a proposed Construction Safety Plan for review

#### Security

1. During pipeline repair work airport runways are closed to all normal air and ground traffic except for Airport Mgr (John DePresca) and DCP approved personnel and vehicles. Emergency aircraft landings could occur during pipeline repair work.
2. The first gate off CR 301 (north of airport) will be locked and unlocked by DCP to allow contractors entrance and exit to the site. The second gate does not have a lock but is too remained closed.
3. Contractors are to keep a log of their employees onsite.
4. Gate by airport office off Hwy 79 (south of airport) to be utilized only with Airport Mgr and DCP's prior approval. The airport has a security camera at this entrance.
5. Contractors are to stay on the unpaved roadway from north gate until directed to designated parking and jobsite locations by DCP.
6. DCP to provide matting across the north gate roadway ditch to job site location.
7. All Contractor and DCP vehicles and equipment are to stay off the airport runway and taxi lanes unless specifically required during pipeline repair work. Permission to use the runway and taxi lanes shall be granted by Airport Mgr and DCP before proceeding. DCP to ensure runway and taxi lanes are cleaned of mud and debris from any vehicles
8. If permission is granted, only rubber tire vehicles can access the runway and taxi lanes. Vehicles with tracks are forbidden from travelling on the runway or taxi lanes.
9. All contractor employees are required to have hard hats with their company names displayed.
10. DCP to provide barriers with signs warning of the active construction site at the pipeline ROW boundary.

#### Safety

1. DCP to conduct pipeline repair and re-grading using a qualified contractors who are subject to DCP Midstream contracts and safety procedures.
2. DCP to conduct Safety Tailgate meetings before work begins each day.
3. DCP's Contractor Supervisor will act as an aircraft spotter near the construction site each day.
4. DCP to provide handheld radios to Airport Mgr, DCP Construction Mgr and Contractor Supervisor. Radios are to be used in case an aircraft is making an emergency landing at the airport.
5. In case of an aircraft emergency landing on runway, all job site personnel are to evacuate to the designated muster area at the second gate on the northern roadway.
6. Airport Mgr to assist in monitoring airport radio for incoming air traffic.
7. Airport Mgr has issued notice to airmen (NOTAM) that airport is closed during construction days. The airport will re-open during the weekends when there is no onsite construction.
8. When the airport is closed, DCP to provide portable yellow X's across the runway at the north and south ends. The yellow X is a universal symbol to communicate that an airport runway is closed. DCP will remove the portable yellow X's from the runway when the airport is opened on the weekends.
9. DCP will paint a yellow line across the runway 1000ft from the runway's north end. This will notify aircraft that the active runway is temporarily 3000ft long when the airport is open
10. Airport Mgr to shut off runway lights at dark each day.
11. Note cell phone reception can be limited at the airport

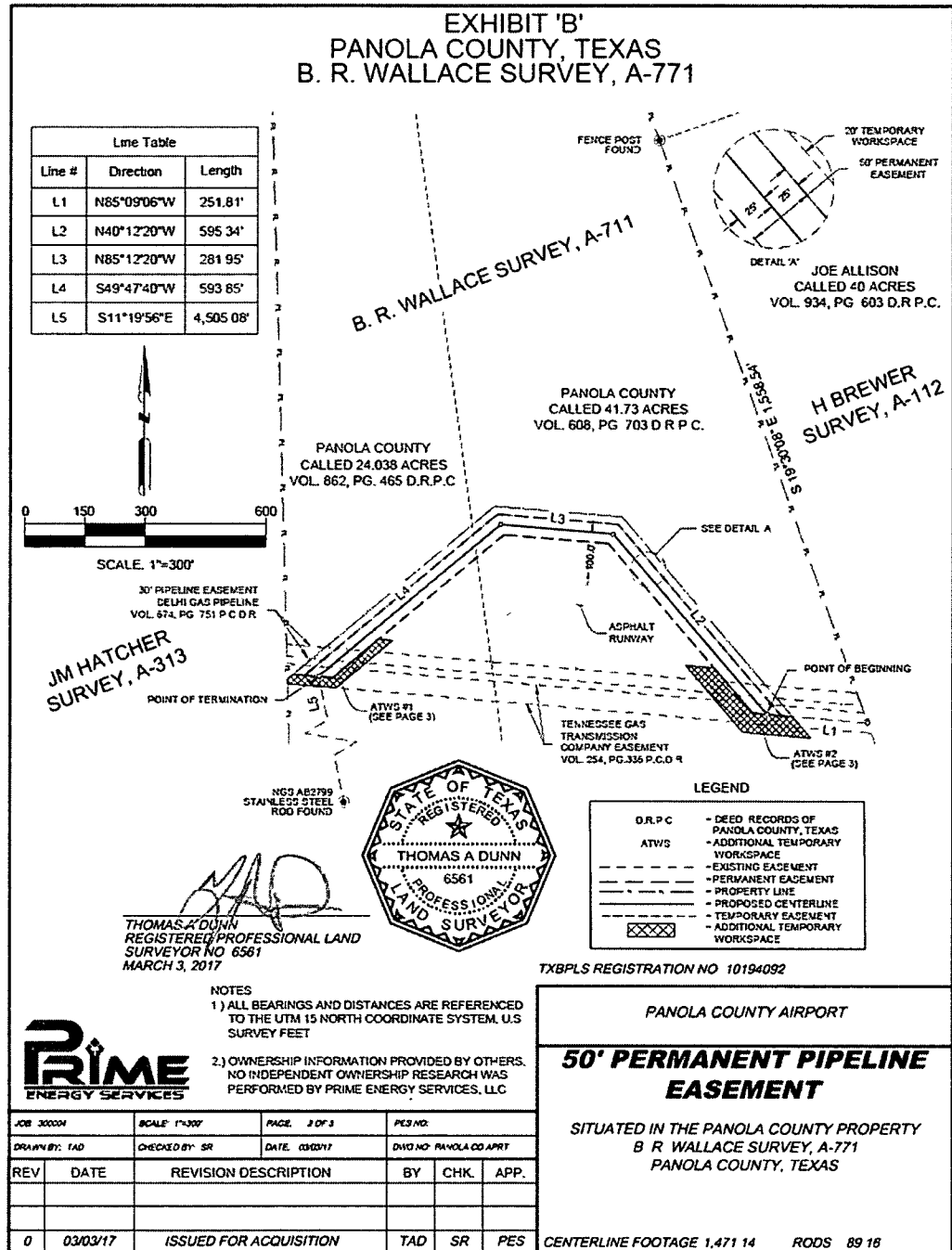
\*Repair Site Protocol Plan is subject to modification during construction if deemed appropriate by Airport Mgr and DCP.

# CAG-10 Gathering Pipeline: Pipeline Relocation

1. Proposed easement plat for reroute north of runway has been reviewed and approved by CCI

- Note CCI owns the pipeline and needs to sign the easement amendment

2. DCP Land Department has started communications with the County to review the proposed reroute easement plat



# Runway Repair Schedule

- Runway Repair	59 days	2/6/17	4/27/17
Site Assessment	1 day	2/6/17	2/6/17
Survey	1 day	2/9/17	2/9/17
KSA Proposal Development	5 days	2/13/17	2/17/17
- KSA Bid Package Development	25 days	2/20/17	3/24/17
Issue for Review	7 days	2/20/17	2/28/17
Internal DCP Approval	3 wks	3/6/17	3/24/17
County Approval	3 wks	3/6/17	3/24/17
Contractors Developing Bids	1 wk	3/27/17	3/31/17
- Bid Evaluation	4 days	4/3/17	4/6/17
Internal DCP Approval	3 days	4/3/17	4/5/17
County Approval	1 day	4/6/17	4/6/17
County to Hire Inspector	1 day	4/7/17	4/7/17
Construction	3 wks	4/7/17	4/27/17

